



**sunrise**spas



*Inspiration*  
by Sunrise Spas



## *Therapy . Water quality . Comfort*

Inspiration Spas knows you have many choices and understands your investment in a spa is one that should not be taken lightly. Whatever your individual reasons are to start enjoying the benefits of living the spa lifestyle, we are committed to exceeding your expectations.

Although many spas may look similar, they are not built the same. Throughout your journey we encourage you to educate yourself, and then compare the design and construction techniques of an Inspiration spa.

Offered as All inclusive model, features:

- Smart Spa Touch Panel
- BBA Audio
- Deluxe Water Management System (O3/UV)



# Strength and stability from the inside out



Every Inspiration spa starts with a solid foundation. Our polyethylene floor seals out critters and moisture while sealing in the heat.

Integrated into the sealed floor is our galvanized steel frame. Engineered to provide the strength and stability required to support over 3200 kg. Unlike wood frames, our galvanized steel structure is built to last. Not only is it 10 times stronger than wood, it will not crack, warp or rot and unlike wood it will not sustain termites or rodents.

The third component of our system is the polysteel cabinet system. The polysteel system provides superior insulating properties and unprecedented sound blocking characteristics. In addition to being completely resistant to rotting, cracking and peeling, our maintenance free cabinet has the look and feel of real wood.

# Green Guard Roxul Insulation



Every Sunrise spa is insulated with our proprietary Green Guard Roxul Insulation.

This method of insulation captures and recirculates the spa's own heat energy throughout the interior cabinet, reducing the demand on the heater – saving you money.

Other benefits of our proprietary insulation:

- ✓ Won't absorb or retain moisture, like traditional spray foam insulation does, preventing mold and mildew build-up.
- ✓ Superior noise absorption makes Sunrise hot tubs some of the quietest spas on the market.
- ✓ Is inorganic and will not provide a food source necessary for bacteria or small animals to consume.

# Spa Equipment

## *Superior control by Balboa watergroup*

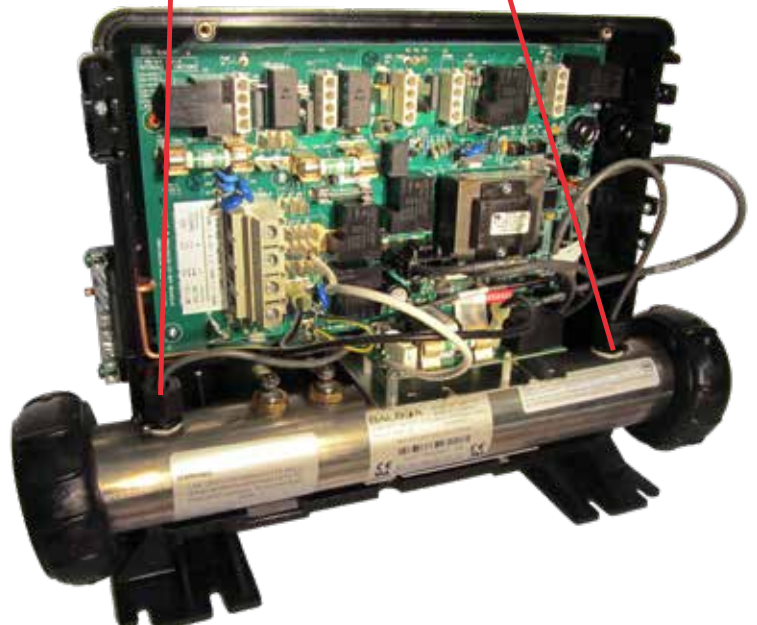
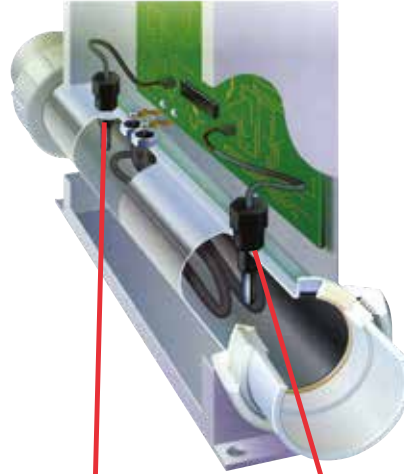
An advanced, state of the art spa controller provides the ultimate in ease of use, safety and reliability for every spa user. The Powerworks™ with M7 technology is a revolutionary new hardware/software platform that completely eliminates mechanical sensor switches and remote through-wall temperature sensors.

The M7 platform features two identical solid state sensors that mount inside the heater manifold. These “Smart Sensors” accurately and reliably measure water temperature while monitoring critical water conditions without the possibility of failure due to mechanical switch malfunction.

## *Designed to last*

Technically and functionally superior, your Sunrise Spas hot tub has been designed in association with medical and engineering professionals to deliver years of trouble-free enjoyment.

Every aspect of the spa, from its structure to the mechanical operation, is recognized as industry leading. Additionally over 300 quality control check points are personally inspected by in-house engineers to ensure every step of the manufacturing process is up to the standards our reputation demands.





## **Smart Touch Panel**

The Sunrise Spas advanced SmartTouch control panels are easy to read and allow you, with the tap of your finger, to change the temperature, adjust lighting or control your massage. Unlike your smart devices this control works even when wet.

## **Deluxe Wi-Fi Systems Controller**

Sunrise Spas now puts your spa's controls in the palm of your hand. Simply download the free app, sync to your home's WiFi system and enjoy complete control. Preset temperature, set filter cycles to save money, or get it ready from the comfort of your home before heading out to enjoy a relaxing spa experience.



## **WaterWay 2.2Kw Dual Speed Pump**

WaterWay designed with two speed motors that have four sets of insulated windings for increased efficiency and a 56-frame motor for added strength, cooler operating temperature and longer motor life.

# Aquanova UV + Ozone Spa Sanitizer

## Technology

With the unique combination of ozone (O<sub>3</sub>) and UV-C technologies, AQUANOVA is the ultimate solution for water sanitation in one compact and simple system. Providing the water quality and spa care one could expect from chlorine/salt water systems, AQUANOVA has more sanitizing power, better reliability, and less hassle, all while significantly reducing residual chlorine consumption to deliver the most advanced sanitation potential available.

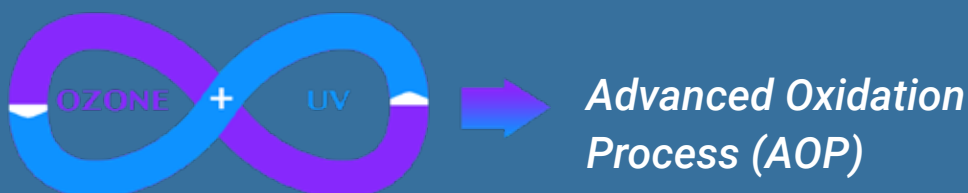


## Innovation

The Patent Pending built-in venturi injector system provides superior water – ozone – uv mixing for even greater water quality. It will also save you space, time and money in production costs. Simply plumb one tube in and one tube out. No separate injector plumbing required. Built-in fault detection and lamp life timer software takes the guesswork out and ensures the system is operating at its optimum.

## How it works

The ozone is produced first, and then exposed to UV light. Once exposed to the UV light, the O<sub>3</sub> is converted to hydrogen peroxide, which is further converted to hydroxyl radicals. As an oxidizer, hydroxyl radicals have been found to be more potent than hydrogen peroxide or ozone and much more powerful than chlorine. This is true synergy in that the whole is greater than the sum of its parts. Scientists conducted an experiment to determine if using UV and ozone together results in better bacterial reduction than UV or ozone alone. Scientists have found that the amount of UV & ozone needed to complete this task was far less when used together, than when used alone.







## Harness the power of airnetic technology

The Air-X seat is a completely new therapy experience available from Inspiration Spas. It is a precision soft tissue massage that provides essential therapy for sensitive areas. Perfect for neck and shoulders, wrists, feet, ankles and paraspinal.

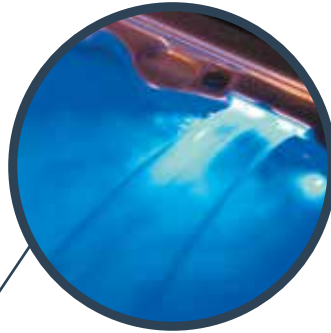
Air-X infuses the soft feel of air and water with kinetic power derived from jet engine technology. It is an air multiplying technology without the extra noisy blowers for efficient and powerful performance. Spa jets can offer power and precision, but Air-X is something completely different. Utilizing Airnetic engineering, Air-X multiplies the air output for a jet stream that is both soft and powerful. By combining three flow patterns with stimulating reflexology, sore muscles and tired joints are soothed and rejuvenated.



# Lighting

## *LED Lit Waterfall*

Enjoy a relaxing upper back massage while listening to the soothing sounds of the LED lit waterfall.



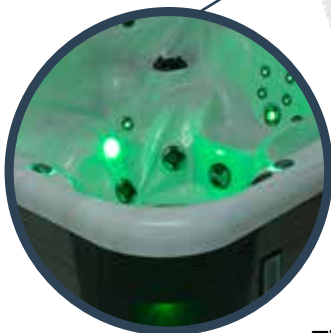
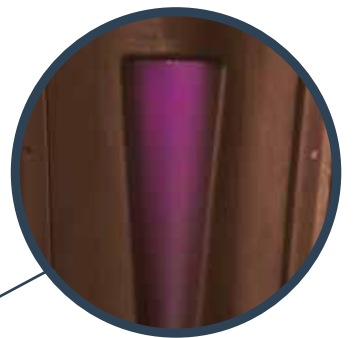
## *LED interior lighting*

Enjoy your favourite mix of colour! The luminescent LED perimeter lights create a dramatic effect below the waters' surface.



## *LED exterior lighting*

Light your way with the LED illuminated corner lights making it easier to see the spas surroundings.



## *LED Lit controls & cupholders*

Enjoy your favourite mix of colour! The luminescent LED lit deck controls create a dramatic effect paired with the LED lit cupholders.



# Music to your ears

When you choose a model from the Sunrise Spas Inspiration Collection it will be complemented with Balboa's latest development in spa audio, the bba2, exactly the Bluetooth audio solution you need for your spa. bba™ can be controlled via your smart device or topside panel (spaTouch™1, spaTouch™2). Listen to your favourite tunes playlist or stream music from your smart device and control it from the convenience of easy to use menus.



## Audio Entertainment

Enjoy an unprecedented amount of choice when it comes to entertainment. With millions of songs to choose from, you can easily stream them through the Bluetooth connection without relying on any additional hardware! Pick some mood music or easily personalize a family member's favourite station or playlist while you relax in the hot tub, and enjoy an immersive musical experience!

## Fully Integrated Speakers

Four fully integrated speakers provide crisp clear fidelity for your listening enjoyment, the placement of these speakers ensures a surround sound experience.

## Subwoofer

Music is not complete without the feel. With the powerful subwoofer, integrated directly into your spas structure, sound will resonate through the spa, so you don't only hear but also feel your music.



'Simply sync  
and enjoy'

# Inspiration 101



4 adults

218 x 188  
x 91 cm

222 kg  
*(empty  
weight)*

1.064  
Litres

## Features

- Smart Touch Panel
- 40 Two-Tone Stainless Steel Jets
- Two-Tone Air Injection Controllers
- Air-X Seat
- LED Illuminated Waterfall & Cupholders
- LED Multi-Colour Safety Light & Deck Controls
- LED Exterior Ambiance Lighting with Deluxe Corners
- Deluxe Wi-Fi Systems Controller
- LED Perimeter Lighting
- Deluxe Water Management System (O3/UV)
- bba2 Bluetooth Audio System

## Equipment

- User Friendly, Balboa Touch Screen Controls
- Two 2.2Kw Dual Speed Jet Pumps
- 3Kw Heating System
- 75 SQ FT Filtration System

## Optional features

- Deluxe Acrylic Colour Upgrade

## Structure

- Capped Bottom Liner
- Galvanized SureSteel Support Structure
- Highwood Exterior Cabinetry
- GreenGuard Roxul Insulation

# Inspiration 102



**6 adults,  
with  
lounge**

**201 x 201  
x 91 cm**

**349 kg**  
*(empty  
weight)*

**1.108  
Litres**

## Features

- Smart Touch Panel
- 39 Two-Tone Stainless Steel Jets
- Two-Tone Air Injection Controllers
- Air-X Seat
- LED Illuminated Waterfall & Cupholders
- LED Multi-Colour Safety Light & Deck Controls
- LED Exterior Ambiance Lighting with Deluxe Corners
- Deluxe Wi-Fi Systems Controller
- LED Perimeter Lighting
- Deluxe Water Management System (O3/UV)
- bba2 Bluetooth Audio System

## Equipment

- User Friendly, Long Lasting Balboa Controls
- Two 2.2Kw Dual Speed Jet Pump
- 3Kw Heating System
- 75 SQ FT Filtration System

## Optional features

- Deluxe Acrylic Colour Upgrade

## Structure

- Capped Bottom Liner
- Galvanized SureSteel Support Structure
- Highwood Exterior Cabinetry
- GreenGuard Roxul Insulation



# Inspiration 103



**6 adults,  
with  
lounge**

**218 x 218  
x 91 cm**

**425 kg**  
*(empty  
weight)*

**1.231  
Litres**

## Features

- Smart Touch Panel
- 51 Two-Tone Stainless Steel Jets
- Two-Tone Air Injection Controllers
- Air-X Seat
- LED Illuminated Waterfall & Cupholders
- LED Multi-Colour Safety Light & Deck Controls
- LED Exterior Ambiance Lighting with
- Deluxe Corners
- Deluxe Wi-Fi Systems Controller
- LED Perimeter Lighting
- Deluxe Water Management System (O3/UV)
- bba2 Bluetooth Audio System

## Equipment

- User Friendly, Balboa Touch Screen Controls
- Two 2.2Kw Dual Speed Jet Pumps
- 3Kw Heating System
- 75 SQ FT Filtration System

## Optional features

- Deluxe Acrylic Colour Upgrade
- Heated Blower with Aromatherapy

## Structure

- Bottom Tray
- Galvanized SureSteel Support Structure
- Highwood Exterior Cabinetry
- GreenGuard Roxul Insulation

# Inspiration 104



7 adults

218 x 218  
x 91 cm

425 kg  
*(empty weight)*

1.280  
Litres

## Features

- Smart Touch Panel
- 54 Two-Tone Stainless Steel Jets
- Two-Tone Air Injection Controllers
- Air-X Seat
- LED Illuminated Waterfall & Cupholders
- LED Multi-Colour Safety Light & Deck Controls
- LED Exterior Ambiance Lighting with Deluxe Corners
- Deluxe Wi-Fi Systems Controller
- LED Perimeter Lighting
- Deluxe Water Management System (O3/UV)
- bba2 Bluetooth Audio System

## Equipment

- User Friendly, Long Lasting Balboa Controls
- Two 2.2Kw Dual Speed Jet Pump
- 3Kw Heating System
- 75 SQ FT Filtration System

## Optional features

- Deluxe Acrylic Colour Upgrade
- Heated Blower with Aromatherapy

## Structure

- Bottom Tray
- Galvanized SureSteel Support Structure
- Highwood Exterior Cabinetry
- GreenGuard Roxul Insulation

# Inspiration 105



**6 adults,  
with  
lounger**

**239 x 239  
x 91 cm**

**492 kg**  
*(empty  
weight)*

**1.470  
Litres**

## Features

- Smart Touch Panel
- 55 Two-Tone Stainless Steel Jets
- Two-Tone Air Injection Controllers
- Air-X Seat
- LED Illuminated Waterfall & Cupholders
- LED Multi-Colour Safety Light & Deck Controls
- LED Exterior Ambiance Lighting with Deluxe Corners
- Deluxe Wi-Fi Systems Controller
- LED Perimeter Lighting
- Deluxe Water Management System (O3/UV)
- 13 x 8 cm Tapered Thermal Cover
- bba2 Bluetooth Audio System

## Equipment

- User Friendly, Balboa Touch Screen Controls
- Two 2.2Kw Dual Speed Jet Pumps
- 3Kw Heating System
- 75 SQ FT Filtration System

## Optional features

- Deluxe Acrylic Colour Upgrade
- Heated Blower with Aromatherapy

## Structure

- Bottom Tray
- Galvanized SureSteel Support Structure
- Highwood Exterior Cabinetry
- GreenGuard Roxul Insulation

# Inspiration 106



7 adults

239 x 239  
x 91 cm

492 kg  
*(empty weight)*

1.590  
Litres

## Features

- Smart Touch Panel
- 56 Two-Tone Stainless Steel Jets
- Two-Tone Air Injection Controllers
- Air-X Seat
- LED Illuminated Waterfall & Cupholders
- LED Multi-Colour Safety Light & Deck Controls
- LED Exterior Ambiance Lighting with Deluxe Corners
- Deluxe Wi-Fi Systems Controller
- LED Perimeter Lighting
- Deluxe Water Management System (O3/UV)
- 13 x 8 cm Tapered Thermal Cover
- bba2 Bluetooth Audio System

## Equipment

- User Friendly, Long Lasting Balboa Controls
- Two 2.2Kw Dual Speed Jet Pump
- 3Kw Heating System
- 75 SQ FT Filtration System

## Optional features

- Deluxe Acrylic Colour Upgrade
- Heated Blower with Aromatherapy

## Structure

- Bottom Tray
- Galvanized SureSteel Support Structure
- Highwood Exterior Cabinetry
- GreenGuard Roxul Insulation



# Colours

## PERSPEX<sup>®</sup> ACRYLIC OPTIONS

Every Sunrise Spas hot tub has an attractive interior finish made from continuous cast acrylic, produced by the renowned manufacturers of Perspex<sup>®</sup> acrylic sheet. This is superior to Ethelyene, 'soft plastic' surfaces. The hard, non-porous surface resists stains, fading, scratches and chemical abuse. With the look of granite, pearl or metalescence, the extremely rugged and durable finish offers beauty and peace of mind.

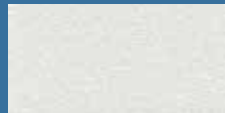


### Standard



*Sterling Marble*

### Deluxe



*Cameo*



*Tuscan Sun*



*Storm Clouds*



*Midnight Canyon*



*Mayan Copper*



*Glacier Mountain*



*Whispering Winds*



*7th Heaven*

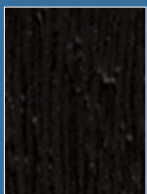
## Cabinet colours

Sunrise Spas Highwood Cabinet is a state of the art wood-alternative material that has the look and feel of natural wood without the maintenance. The material is impact resistant, impervious to weather or insect damage and will never splinter, crack or rot. The attractive exterior locks in heat and seals out cold air - providing a beautiful look and feel.



### Panels

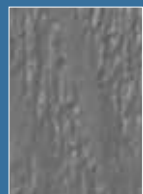
*Black*



*Espresso*



*Grey*



*Fieldstone*



### Corners

*Black*



*Beige*



*Coffee*



# Cabinet & Cover

## Fieldstone



**PANEL**  
Fieldstone  
**CORNER**  
Beige  
**COVER**  
Mocha



**PANEL**  
Fieldstone  
**CORNER**  
Coffee  
**COVER**  
Mocha



**PANEL**  
Fieldstone  
**CORNER**  
Black  
**COVER**  
Black

## Espresso



**PANEL**  
Espresso  
**CORNER**  
Beige  
**COVER**  
Mocha



**PANEL**  
Espresso  
**CORNER**  
Black  
**COVER**  
Mocha



**PANEL**  
Espresso  
**CORNER**  
Black  
**COVER**  
Black

## Grey



**PANEL**  
Grey  
**CORNER**  
Black  
**COVER**  
Black



**PANEL**  
Grey  
**CORNER**  
Black  
**COVER**  
Grey

## Black



**PANEL**  
Black  
**CORNER**  
Beige  
**COVER**  
Black



**PANEL**  
Black  
**CORNER**  
Black  
**COVER**  
Black



 *Inspiration*  
by Sunrise Spas

[www.sunrise-spa.eu](http://www.sunrise-spa.eu)